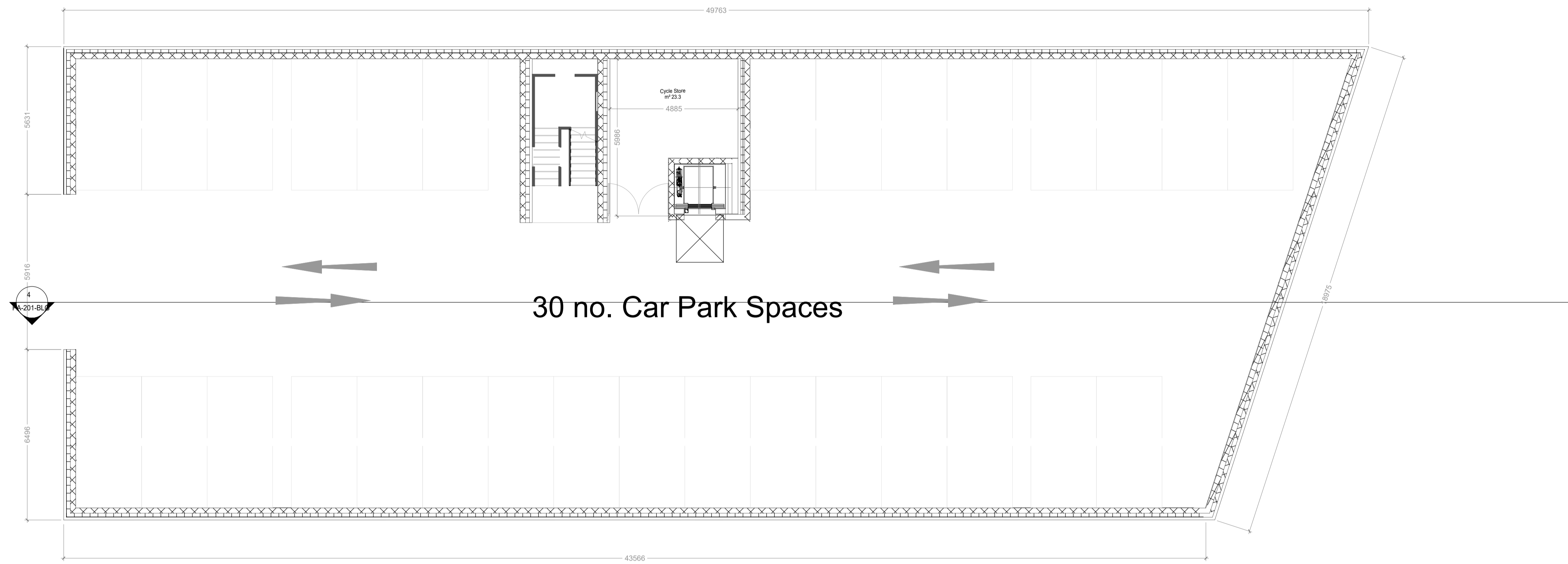
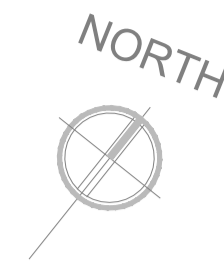
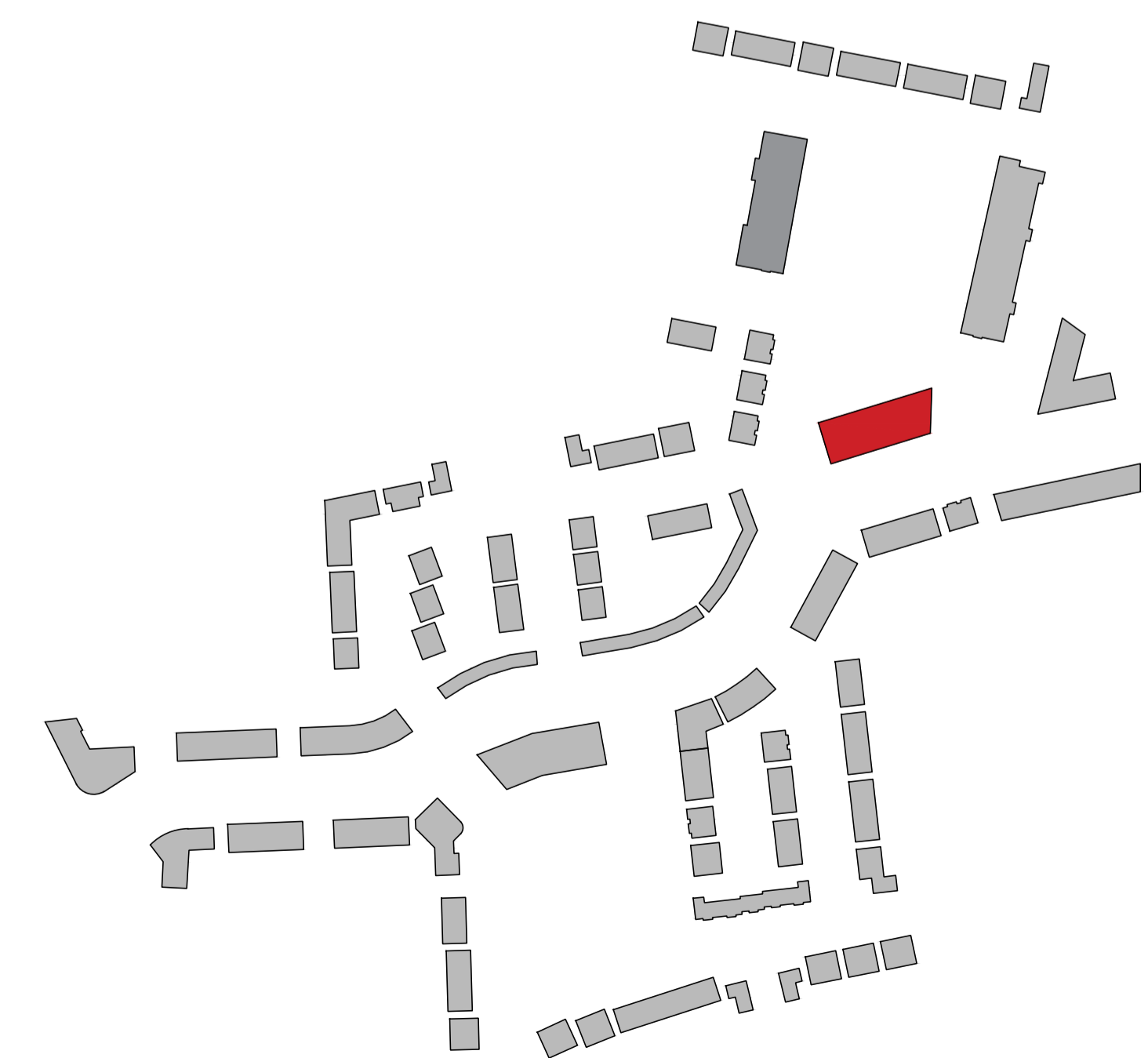


Rev.	By	Date	Description



Block G -Basement Plan
1:100



CPR Note:
All works to be carried out using proper materials which are fit for the use they are intended and for the condition in which they are to be used.
All materials used in connection with the works to comply with the Construction Products Regulation (EU) No. 305/2011 and the harmonised technical specifications/standards that fall within the remit of the CPR No. 305/2011

van Dijk Architects
MILL HOUSE, MILL STREET, DUNDALK, CO. LOUTH
PH: 042-8554460 FAX: 042-8554460
INFO@VANDIJKARCHITECTS.COM

DRAWING TITLE			
APARTMENT BLOCK G BASEMENT PLAN			
AS INDICATED	DRAWING NUMBER	JOB	CLIENT
AI	1757-PA-100-BLG	CLONMINCH TULLAMORE	STEINFORT INVESTMENT
AC	DATE	JUNE 2021	

FIGURED DIMENSIONS MUST BE USED IN PREFERENCE TO SCALED DIMENSIONS. ANY DIMENSIONAL DISCREPANCIES MUST BE REPORTED TO THE ARCHITECT IMMEDIATELY. THIS DRAWING REMAINS THE COPYRIGHT OF VAN DIJK ARCHITECTS. IT MUST NOT BE USED FOR ANY PURPOSE, BEFORE OR OTHERWISE WITHOUT THE EXPRESS PERMISSION OF THIS PRACTICE. DO NOT COPY OR REDISTRIBUTE THESE DRAWINGS OR ANY ADDITIONAL INFORMATION WITHOUT THE EXPRESSED APPROVAL OF van Dijk Architects